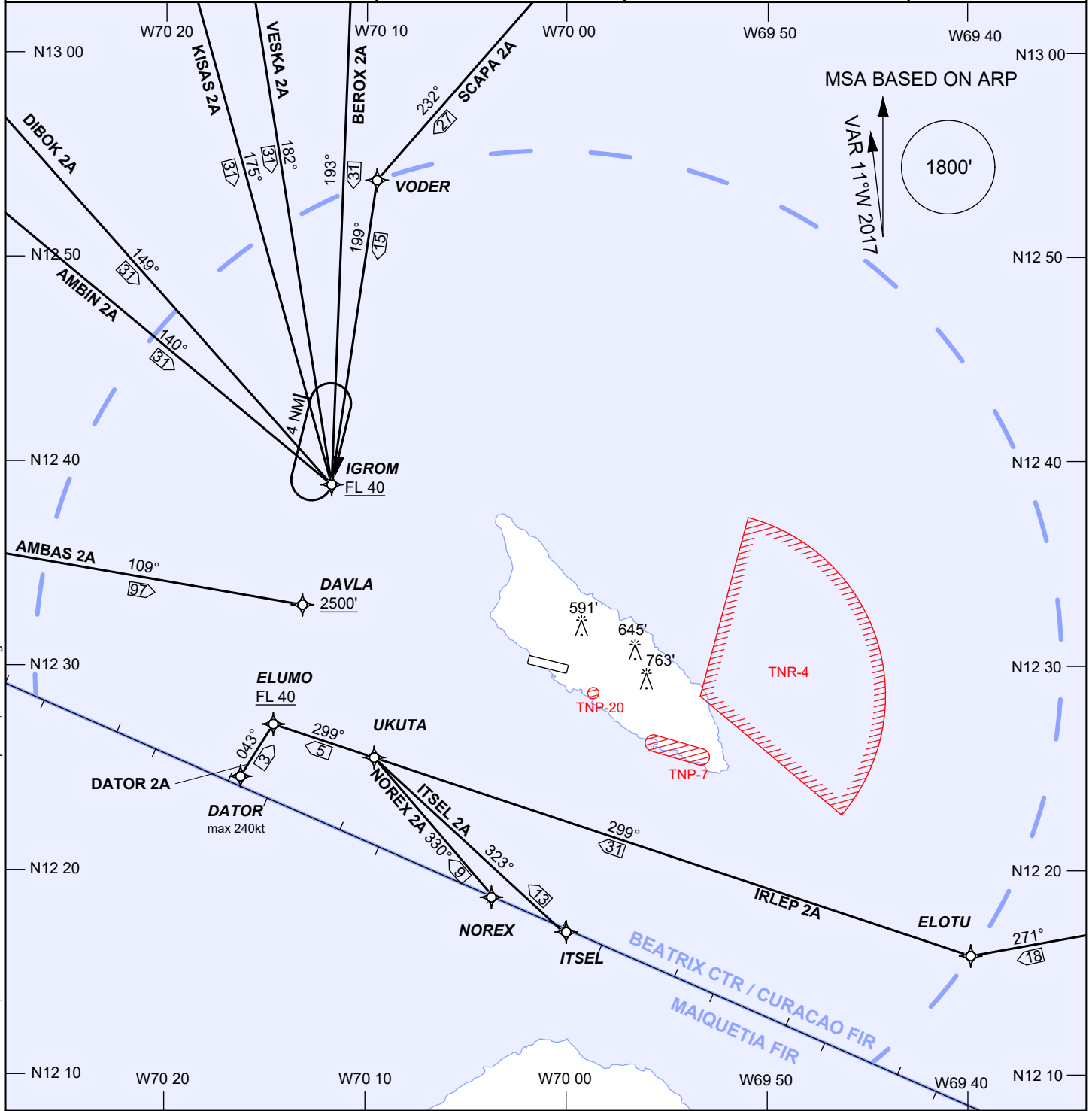


AIP DUTCH CARIBBEAN

RNAV (GNSS) ARRIVALS RWY 11 INSTRUMENT	AD ELEVATION: 62' TRANS LEVEL: FL 40 TRANS ALT: 2500' (2438')	BEATRIX: TWR 118.0 APP 120.9 APRON 121.6 ATIS 132.1	REINA BEATRIX INT'L (TNCA) ARUBA
---	---	---	--



CHANGES: altitude restriction at UKUTA removed; altitude restriction at ELLUMO and IGROM updated; STAR designators.

1. RNAV-1 required.
2. GNSS required.
3. A request for the RNAV (GNSS) RWY 11 approach should be made on first contact with ATC.
4. Altitudes, elevations and heights in feet, distances in nautical miles, bearings are magnetic.

ICAO STAR DESIGNATORS

AMBAS 2A	ITSEL 2A
AMBIN 2A	KISAS 2A
BEROX 2A	NOREX 2A
DATOR 2A	SCAPA 2A
DIBOK 2A	VESKA 2A
IRLEP 2A	

TNP-7	GND - 2500'
TNR-4	SFC-by NOTAM
TNP-20	GND - 2500'

